



Dispensing Propane Safely Pre-Fill Inspection



Cylinder Verification

DOT Cylinder Code Chart			
DOT/ICC Cylinder Codes for Propane Service	Typical Cylinder Material	Cylinder Construction	Service Pressure (PSIG)
3A	Steel	Seamless	240 or 300
3AA	Steel	Seamless	240 or 300
3B	Steel	Seamless	240 or 300
4B240	Steel	2 or 3 pc., Welded, or Brazed	240
4BA240	Alloy Steel (Prescribed)	2 or 3 pc., Welded, or Brazed	240
4BA260	Alloy Steel (Prescribed)	2 or 3 pc., Welded, or Brazed	260
4BA300	Alloy Steel (Prescribed)	2 or 3 pc., Welded, or Brazed	300
4BW240	Steel (Prescribed)	3 pc., Welded	240
4BW300	Steel (Prescribed)	3 pc., Welded	300
4E240	Aluminum	2 pc., Welded	240
4E300	Aluminum	2 pc., Welded	300
39-240/300 (Non-refillable)	Steel	Welded	240
*ICC 26-150	Steel	Welded	150
*ICC 26-300	Steel	Welded	300

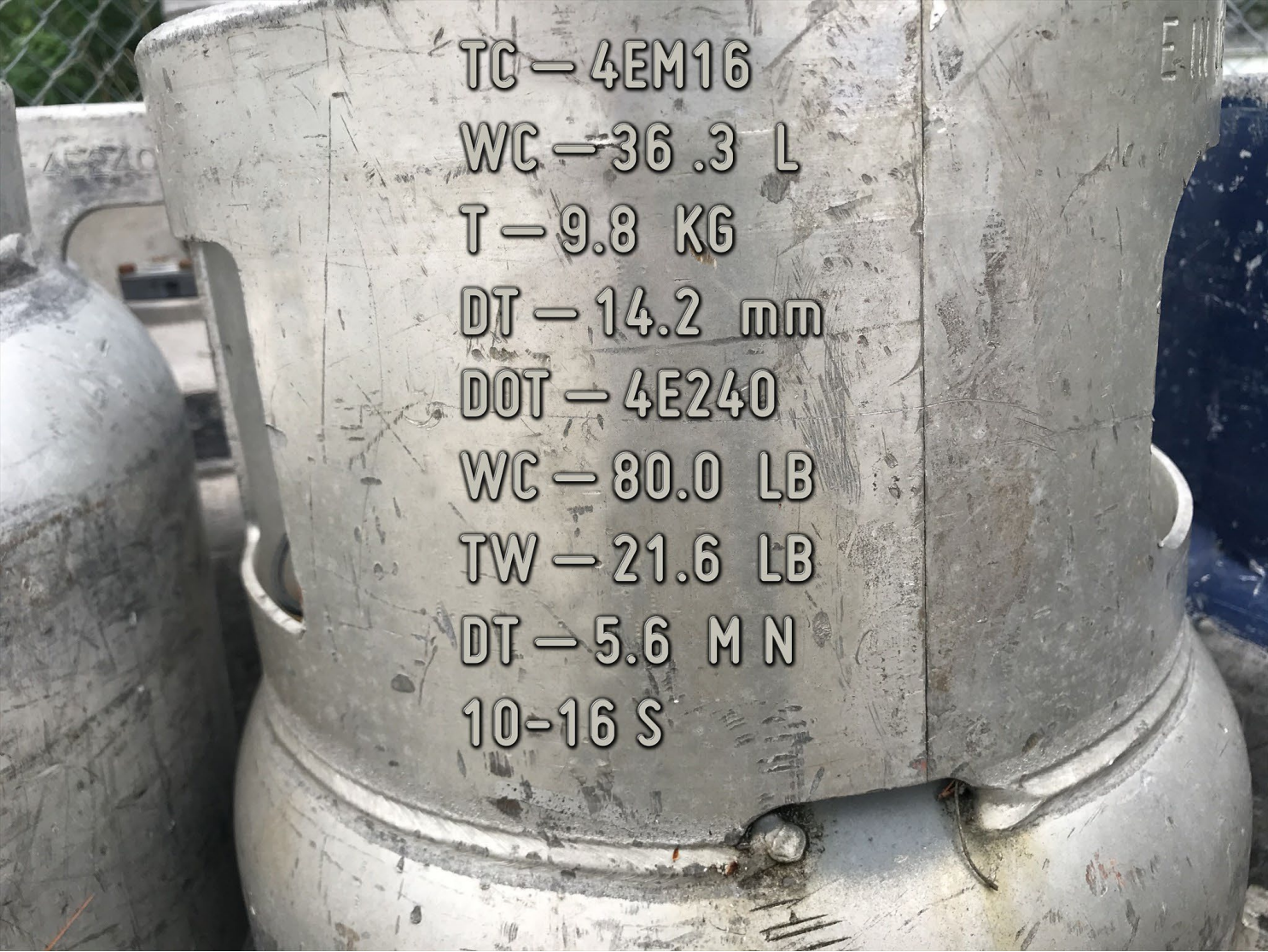
*NOTE: Cylinders are no longer manufactured under this code; however, cylinders manufactured under this code are still in use today. Also, the term "service pressure" for these codes had a different meaning at the time the code was written.

Is the cylinder out of date?



CYLINDER REQUALIFICATION METHODS	
EXTERNAL HYDROSTATIC EXPANSION	
LETTER STAMP	NEXT REQUALIFICATION
NONE	12 YRS
DATE 10/15	DATE 10/27
PROOF PRESSURE TEST	
LETTER STAMP	NEXT REQUALIFICATION
S	10 YRS
DATE 10/15 S	DATE 10/25
EXTERNAL VISUAL INSPECTION	
LETTER STAMP	NEXT REQUALIFICATION
E	5 YRS
DATE 10/15 E	DATE 10/20 E

Should this cylinder be refilled?



CAN be filled.

CANNOT be filled.

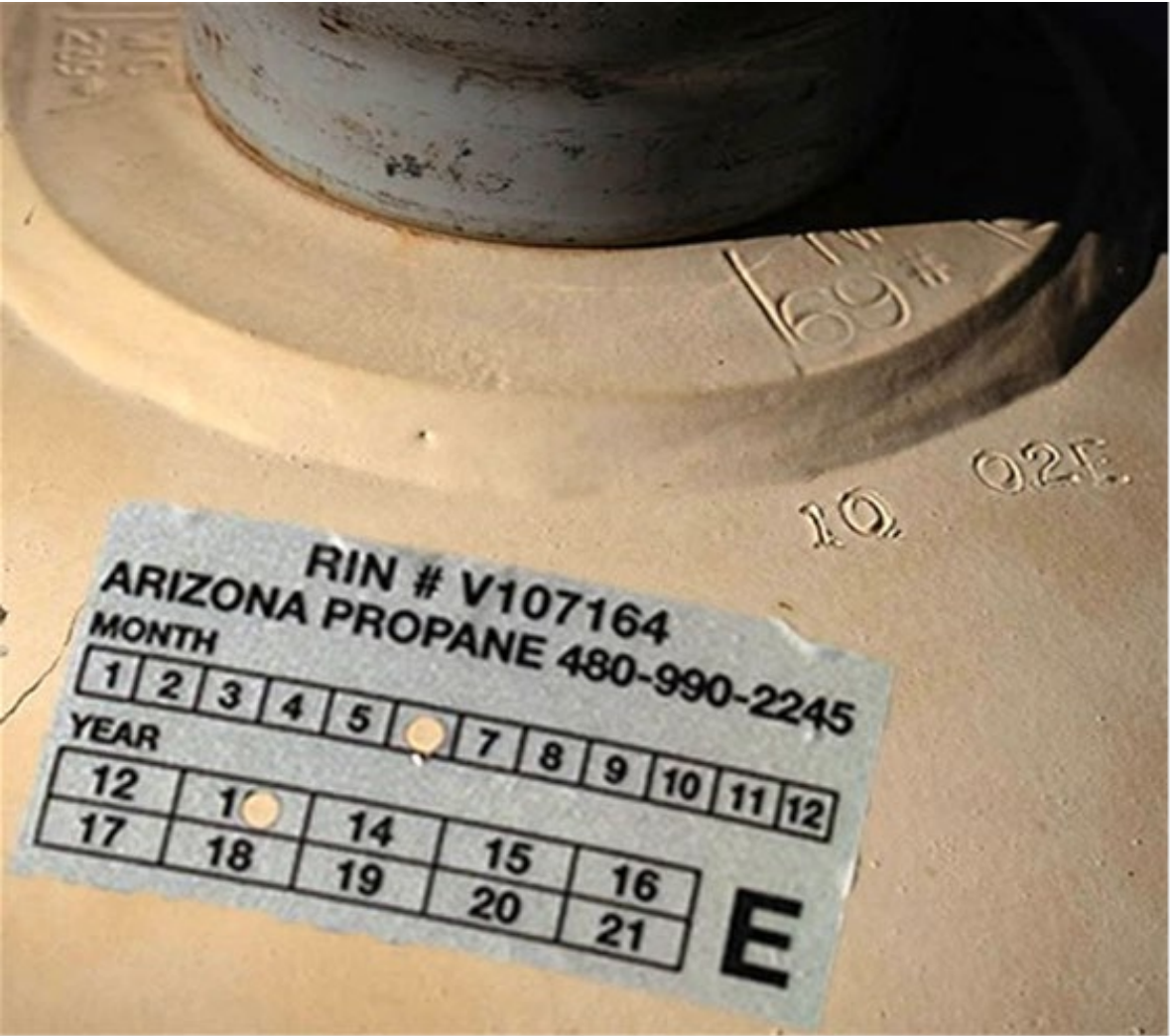
Should this cylinder be refilled?



**This cylinder can
be filled.**

This cylinder was requalified in 2016
by the proof pressure test method(S).
It is not due for requalification until
2026.

Should this cylinder be refilled?



CAN be filled.

CANNOT be filled.

Should this cylinder be refilled?



This cylinder
CANNOT be filled.

The cylinder is out of date and should have been requalified in 2018.

Should this cylinder be refilled?



CAN be filled.

CANNOT be filled.

Should this cylinder be refilled?



This cylinder
CANNOT be filled.

This cylinder cannot be refilled. It should have been requalified within 12 years of its manufacture date, in 2011.

Cylinder That Needs to be Purged



Visual Inspection



Visual Inspection



Visual Inspection



Visual Inspection



Visual Inspection



Visual Inspection



Visual Inspection



Visual Inspection



Set These Cylinders Aside



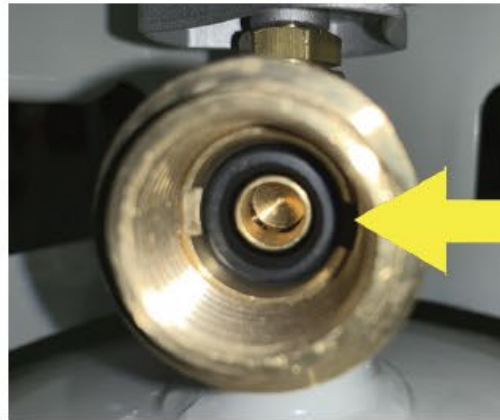
Face Seal Inspection

2020 NFPA 58 UPDATE:

PROPANE
EXCEPTIONAL ENERGY®

FACE SEAL INSPECTION GUIDE

Does the cylinder valve look like this?



This is a 20 lb cylinder equipped with an OPD valve and a face seal that is in good condition.

YES? THEN YOU NEED TO INSPECT THE FACE SEAL.

These are some examples of damage. If the face seal doesn't look like the one above, or if you are concerned:

DO NOT FILL THE CYLINDER.

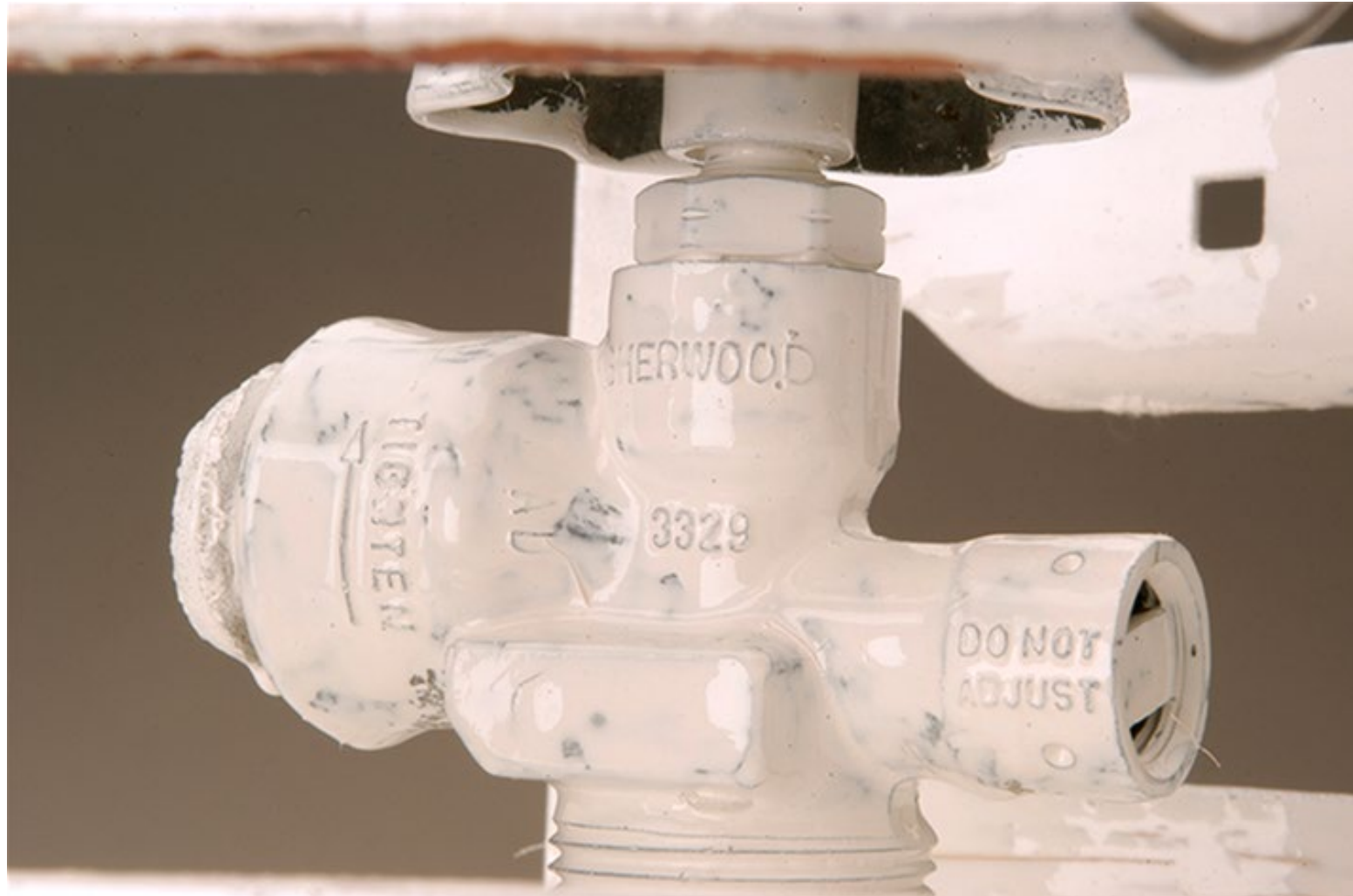
Inspect Valves and Accessories Regularly

Check for signs of wear.



Inspect Valves and Accessories Regularly

Example of painted over openings.



Inspect valves and accessories

regularly These are examples of corroded brass.





Ensure presence of trained operator



Review: Take the Quiz

True/False

Always verify the cylinder you are preparing to fill is a propane cylinder by reviewing the design code specification markings on the cylinder.

True

False

True/False

Always verify the cylinder you are preparing to fill is a propane cylinder by reviewing the design code specification markings on the cylinder.

True

False

True/False

If a cylinder can not be filled because of rust damage it must be stored; the customer is not allowed to take the damaged cylinder with them.

True

False

True/False

If a cylinder can not be filled because of rust damage it must be stored; the customer is not allowed to take the damaged cylinder with them.

True

False

Matching

External Hydrostatic Expansion (None)

5 years

Proof Pressure Test (S)

10 years

External Visual Inspection (E)

12 years

Matching

